



# Your Labware Online Shop

Shop laboratory equipments, consumables and chemicals

**Faster & Easier**

**Best Price**  
**Safe Delivery**  
All-rounded After-sales Service



labware.com.hk



## Hong Kong Labware Your Partner in Laboratory

Address all your laboratory needs with our One-Stop-Shop

✉ info@labware.com.hk

☎ (825) 2425-2625

### 1 Chemicals



### 2 Life Science Reagents



### 3 Lab Consumables



### 4 Lab General Equipment



### 5 Analytical Instrument



### 6 Lab Furniture & Renovation



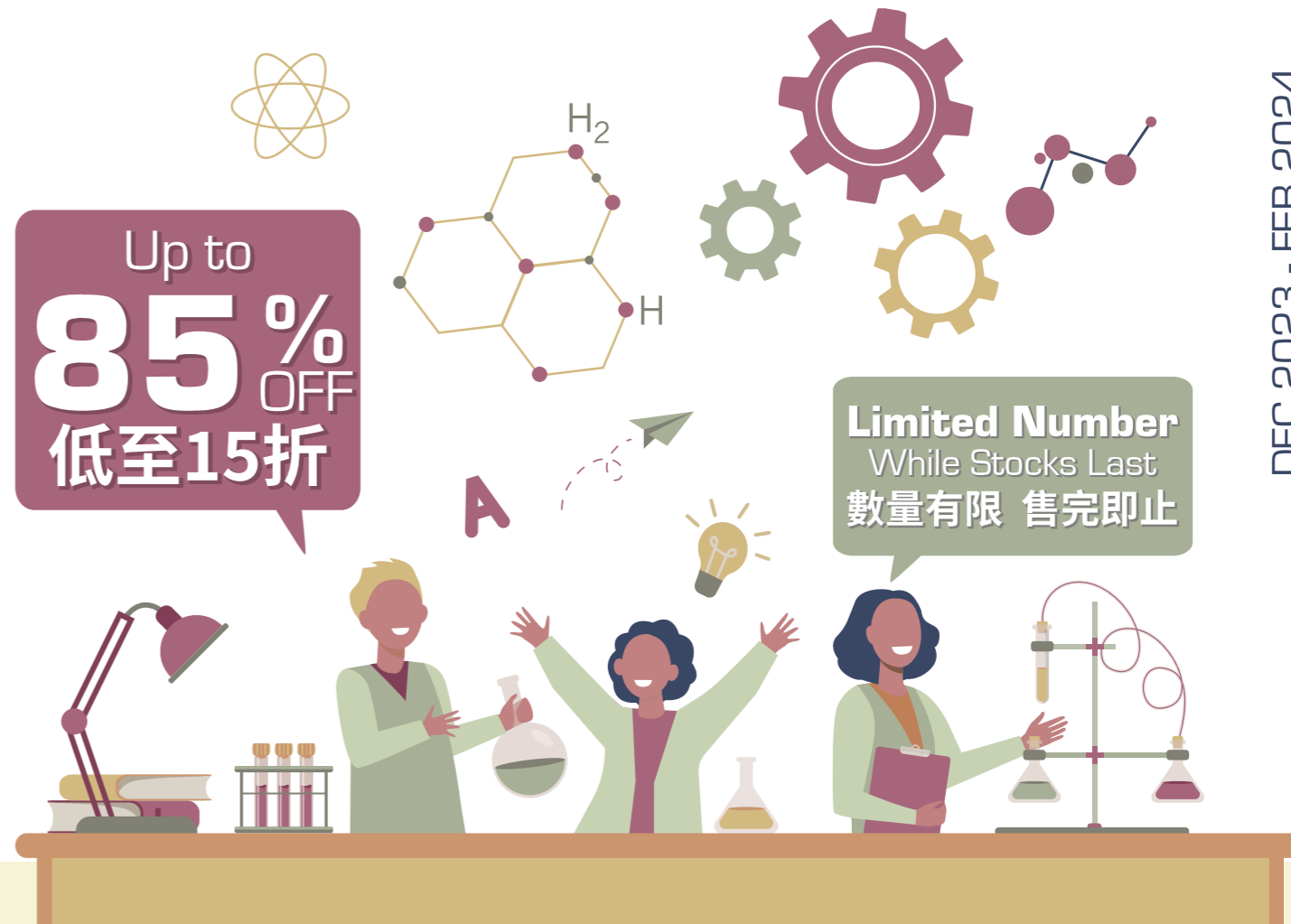
Viewing Promotion Details

# 2023

# THANKFUL SPECIAL SALE

Up to  
**85% OFF**  
低至15折

**Limited Number**  
While Stocks Last  
數量有限 售完即止



# 年度感謝大「折」日 Thankful Special Sale

DEC 2023 - FEB 2024





Item code: XUB25  
**Grant Scientific 25L Digital Ultrasonic Bath XUB25**



~~\$45,699~~ 60% OFF  
**\$17,920**

- Frequency LEAP technology provides more homogeneous ultrasonic activity throughout the tank
- Dimensions (h x d x w): 365 x 385 x 546mm
- Working capacity: 25L
- Temperature range: Ambient +5 to 70°C



Item code: CX100B-11M  
**Cryogenic Shippers, 4.4 L, 30 day static hold time**



**BIG SALE**  
**\$7,050**

- With 11 in. Canister
- Static Holding Days: 30
- Stores 102 1.5 ml vials (6/cane)
- Stores 280 1/2 cc straws (10/cane)



Item code: ABJ220-4NM  
**Analytical balances ABJ-NM**



~~\$23,808~~ 62% OFF  
**\$9,050**

- Weighing capacity [Max] g: 220
- Read-ability [d] mg: 0.1



Item code: ADB 200-4  
**Analytical balance ADB**



~~\$14,304~~ 63% OFF  
**\$5,300**

- Weighing capacity [Max] g: 220
- Read-ability [d] mg: 0.1



Item code: Z130M  
**Hermle mini centrifuges**



~~\$5,099~~ 41% OFF  
**\$2,950**

- max.Speed: 5,500 rpm
- max. RCF: 2,000 xg
- max. Volume: 12 x 1.5 / 2.0 ml tubes, 32 x 0.2 ml PCR tubes, 4 x PCR stripe (8 x 0.2 ml)



Item code: Z167M  
**Hermle Microlitre Centrifuge**



~~\$15,299~~ 19% OFF  
**\$12,330**

- max.Speed: 14,000 rpm
- max. RCF: 15,994 xg
- max. Volume: 18 x 1.5 / 2.0 ml tubes
- Speed Range: 200 - 14,000 rpm



Item code: ADJ 100-4  
**Analytical balance ADJ**



~~\$15,342~~ 58% OFF  
**\$6,420**

- Weighing capacity [Max] g: 120
- Read-ability [d] mg: 0.1



Item code: ADJ 200-4  
**Analytical balance ADJ**



~~\$16,608~~ 66% OFF  
**\$5,670**

- Weighing capacity [Max] g: 220
- Read-ability [d] mg: 0.1

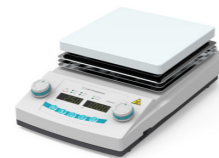


Item code: AAH14145K  
**OF4-15S Standard Forced Convection Oven**



~~\$20,077~~ 37% OFF  
**\$12,640**

- Chamber volume [L/cu ft]: 147/5.19
- Temperature Range [°C]: Amb. + 10°-250
- Heating time to 100°C [min]: 15
- Interior [W x D x H, mm/inch]: 550 x 376 x 710
- Exterior [W x D x H, mm]: 728 x 704 x 914



Item code: AAH35085K  
**T-18QG Hotplate (Digital type)**



~~\$4,974~~ 33% OFF  
**\$3,330**

- Temperature range [°C / °F]: Max. 350 / 662
- Load, Max. [kg / lbs]: 25 / 55.1
- Top plate Dimension [WxD] [mm]: 180x180



Item code: EMS 3000-2  
**School balance EMS**



~~\$5,520~~ 85% OFF  
**\$800**

- Weighing capacity [Max] g: 3000
- Read-ability [d] g: 0.01



Item code: ORF3SM  
**Digital refractometer ORF-S**



~~\$6,200~~ 68% OFF  
**\$2,000**

- Brix: 0% - 45%
- Salt[NaCl]: 0% - 28%
- Refractive index: 1.3330 nD - 1.3900 nD

Item code: AAH821232K  
**TH3-ME-065 (Tabletop type) Temperature & Humidity Chamber**



~~\$115,444~~ 44% OFF  
**\$65,000**

- Chamber volume [L / cu ft]: 65 / 2.3
- Dimension [WxDxH] [mm]: 400 x 330 x 495
- Temperature Range[°C]: -20 to 150
- Humidity Range [%RH]: 20 to 95



Item code: 158750  
**High Pressure Pump HPP-1100**



~~\$20,440~~ 50% OFF  
**\$10,205**

- 10L/min, 196kPa [2kg/cm<sup>2</sup>]
- Max. flow rate: 24/26L/min
- Simply set it together with the high-pressure pump base (sold separately) on the top of the CA type



## K KOLD SYSTEMS



Item code: *KS-30IM*  
**Kold Systems Flake Ice Maker**



~~\$41,369~~ 30% OFF  
**\$8,000**

- Capacity: 30kg/day
- Ice Storage: 7kg
- SS304 finish
- Ext. Dimension: 352 x 551 x 565mm



Item code: *KS-100IM*  
**Kold Systems Flake Ice Maker**



~~\$20,525~~ 27% OFF  
**\$15,000**

- Capacity: 100kg/day
- Ice Storage: 20kg
- SS304 finish
- Ext. Dimension: 548 x 611 x 883mm



Item code: *KS-600F*  
**-20 C Laboratory Freezer**



~~\$24,000~~ 31% OFF  
**\$14,500**

- Capacity: 620L
- Solid door design
- Exterior: Painted Steel ; Interior: Moulded ABS
- Operating temperature: -10 to -25°C



Item code: *KS-600R*  
**4 C Laboratory Refrigerator**



~~\$19,000~~ 29% OFF  
**\$13,500**

- Capacity: 620L
- Solid door design
- Exterior: Painted Steel ; Interior: Moulded ABS
- Operating temperature: 2 to 8°C



Item code: *KS-700ULT*  
**Ultralow Freezer**



~~\$113,200~~ 51% OFF  
**\$55,000**

- Capacity: 741L
- Exterior: Painted Steel
- Insulation: ABS + Polyurethane
- Interior: Stainless Steel
- Operating temperature: -60 to -80°C

## VESTFROST



Item code: *F-90i*  
**-5 C to -25 C Freezer with i-care controller**



~~\$26,649~~ 41% OFF  
**\$15,100**

- Volume: 90L
- Temperature range: -5°C to -25°C
- Ext. Dimension: 672 x 595 x 642mm



Item code: *R-90i*  
**2 C to 20 C Refrigerator with i-care controller**



~~\$24,030~~ 37% OFF  
**\$15,200**

- Volume: 90L
- Temperature range: 2°C to 20°C
- Ext. Dimension: 672 x 595 x 642mm



Item code: *R-138i*  
**2 C to 20 C Refrigerator with i-care controller**



~~\$24,330~~ 36% OFF  
**\$15,500**

- Volume: 138L
- Temperature range: 2°C to 20°C
- Ext. Dimension: 825 x 595 x 642mm



Item code: *R-427i*  
**2 C to 20 C Refrigerator with i-care controller**



~~\$26,830~~ 34% OFF  
**\$17,000**

- Volume: 427L
- Temperature range: 2°C to 20°C
- Ext. Dimension: 2002 x 595 x 642mm



Item code: *MP-310*  
**Lively 300V Power Supply**



~~\$5,423~~ 41% OFF  
**\$3,010**

- Output Voltage / Inc: 5 - 300V / 1V
- Output Current / Inc: 1 - 700mA / 1mA
- Power: Output: 150W; Input: 200W
- Rated Voltage: 100-240V; 47-60Hz

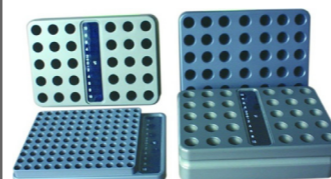


Item code: *A-STWS-1100*  
**4ft Safety Balance Workstation without Filter box**



**BIG SALE**  
**\$10,000**

- Electrical power supply: 220V, 50Hz
- Cabinet body: Acrylic
- Including support stand



Item code: *EC-120-PCR*  
**EvenCool Blocks (only 120 X 0.2 ml Tubes with Temperature indicator)**



**BIG SALE**  
**\$1,660**

- Rapidly Adapt to Temperature: -196°C to +100°C
- +/- 0.1°C temperature uniformity of all tubes when cooling, freezing or heating/thawing



Item code: *GC-WS-CB-35X2.0*  
**GeloCool (includes cooling core C & Block 35 x 2.0 ml Tubes)**



**BIG SALE**  
**\$3,630**

- Provides over 14 hours of 0°C to 4°C cooling



Item code: LX-LS-1500

### LabSim Static laboratory bench (W1500)



~~\$10,850~~ 14% OFF  
**\$9,350**

- Dim: 1500x750x844mm
- Worktop: 20mm Phenolic Resin,
- Frame: Rectangle Frame, 40x60mm in Oven Baked Powder Coated Finish Steel
- With 30mm Adjustable Levelling Feet



Item code: LCM-1605-008

### The Fundamental Gaslifting Chair with Plastic Footring & Wheels



~~\$1,400~~ 15% OFF  
**\$1,190**

- Material: Vinyl, Colour in Black
- Foot Ring: Plastic
- Whit Plastic Wheels
- Seat Height: 595mm to 840mm



## BROEN-LAB



Item code: 17556.009

### Body shower with eye/face shower and shower and bowl, modular.



~~\$21,200~~ 15% OFF  
**\$18,100**

- In brass and SS with chemical resistant red BROEN-LAB Polycoat with selfdraining shower head.
- Eye wash with built-in FLOWFIX for regulation of water flow (14 l/min).
- Bowl in Stainless Steel.



Item code: 17580.009

### Body shower, ceiling mounted with selfdraining head.



~~\$6,300~~ 15% OFF  
**\$4,570**

- In brass with chemical resistant BROEN-LAB Polycoat.
- Min. working pressure: 1 bar.
- Weight: Approx. 2 kg

Item code: LX-LS-VST-L-N

### The All-rounder 5 legs Lab Stool



~~\$530~~ 15% OFF  
**\$450**

- Material: Vinyl, Colour in Black
- No Foot Ring
- With Plastic Wheels
- Seat Height: 420mm - 550mm
- Standard Comply: EN BS 7176:2007 for medium hazard



Item code: LX-LS-PBC-T-MR

### The Core 5 legs Lab Stool



~~\$1,450~~ 15% OFF  
**\$1,230**

- Material: PU, Colour in Black
- Foot Ring: Metal
- With or Without Castors
- Seat Height: 575mm - 825mm



Item code: 8922021

### 22 Gal Corrosive Series : Sure-Grip®



~~\$13,648~~ 15% OFF  
**\$11,600**

- Ideal for areas with limited floor space or to expand current storage conditions
- Offer same quality safety features as cabinets for flammables
- FM-approved



Item code: KC4X

### Stainless Steel Emergency Shower & Double Outlet EyeWash



~~\$6,200~~ 15% OFF  
**\$5,270**

- Performance: anti-corrosion; anti-acid, alkali and salt solution
- Water out volume: water out volume of Eye Washer head:12-18L / MIN, water out volume of shower head:120-180L / MIN



Item code: LX-LS-PLB-T-MR

### The Pose 5 legs Lab Stool



~~\$970~~ 15% OFF  
**\$820**

- Material: PU, Colour in Black
- Foot Ring: Metal
- Seat Height: 620mm - 730mm



Item code: LX-LS-VSD-S-MR

### The Pony Saddle Chair



~~\$1,130~~ 15% OFF  
**\$960**

- Material: Vinyl, Colour in Black
- Foot Ring: Metal
- With or Without Castors
- Seat Height: 510mm - 690mm



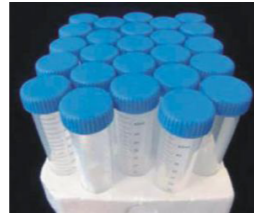




Item code: 309101008  
2mL microtube  
500/PK,10PK/CS



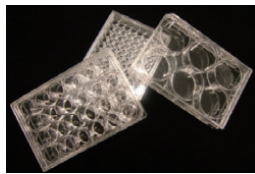
~~\$130~~ 46% OFF  
**\$70**



Item code: 310109003  
15ml TC tube  
50pcs/pack, 500pcs/case



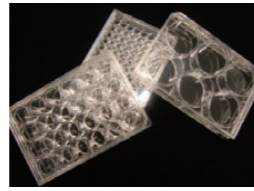
~~\$853~~ 50% OFF  
**\$430**



Item code: 310109005  
6 well plate, flat bottom  
50pcs/case



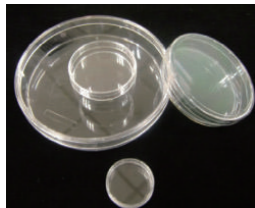
~~\$743~~ 38% OFF  
**\$440**



Item code: 310109007  
24 well plate, flat bottom,  
50pcs/case



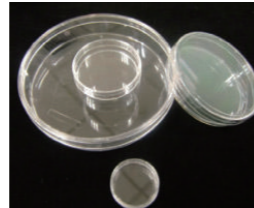
~~\$743~~ 38% OFF  
**\$370**



Item code: 310109009  
35mm petri dish  
20pcs/pack, 500pcs/case



~~\$773~~ 48% OFF  
**\$400**



Item code: 310109010  
60mm petri dish  
20pcs/pack, 500pcs/case



~~\$1,004~~ 48% OFF  
**\$520**



Item code: 310109015  
75cm<sup>2</sup> Tissue culture flask, seal  
cap, 5pcs/pack, 100pcs/case



~~\$1,314~~ 56% OFF  
**\$580**



Item code: 310109016  
75cm<sup>2</sup> Tissue culture flask, Vent  
cap with filter 0.22um  
5pcs/pack, 100pcs/case



~~\$1,330~~ 49% OFF  
**\$680**



Item code: 310109017  
175cm<sup>2</sup> Tissue culture flask, seal  
cap, 5pcs/pack, 40pcs/case



~~\$983~~ 51% OFF  
**\$480**



Item code: 311117002  
universal tip, yellow, 200ul, 96  
pcs/rack, 10 racks/inner box



~~\$226~~ 29% OFF  
**\$160**

MORE  
COMING  
SOON