

Your Labware Online Shop

Shop laboratory equipments, consumables and chemicals

Faster & Easier

Best Price
Safe Delivery
All-rounded After-sales Service



labware.com.hk



Hong Kong Labware Your Partner in Laboratory

Address all your laboratory needs with our One-Stop-Shop

✉ info@labware.com.hk

☎ (825) 2425-2625

① Chemicals



② Life Science Reagents



③ Lab Consumables



④ Lab General Equipment



⑤ Analytical Instrument



⑥ Lab Furniture & Renovation



Viewing Promotion Details

2023

THANKFUL SPECIAL SALE

Up to
70% OFF
低至7折

Limited Number
While Stocks Last
數量有限 售完即止



年度感謝大「折」日 Thankful Special Sale

DEC 2023 - FEB 2024



Item code: XUB25
Grant Scientific 25L Digital Ultrasonic Bath XUB25

Sold out

- Frequency LEAP technology provides more homogeneous ultrasonic activity throughout the tank
- Dimensions (h x d x w): 365 x 385 x 546mm
- Working capacity: 25L
- Temperature range: Ambient +5 to 70°C



Item code: CX100B-11M
Cryogenic Shippers, 4.4 L, 30 day static hold time



BIG SALE
\$7,050

- With 11 in. Canister
- Static Holding Days: 30
- Stores 102 1.5 ml vials (6/cane)
- Stores 280 1/2 cc straws (10/cane)



Item code: Z130M
Hermle mini centrifuges



\$5,000 **41% OFF**
\$2,950

- max.Speed: 5,500 rpm
- max. RCF: 2,000 xg
- max. Volume: 12 x 1.5 / 2.0 ml tubes, 32 x 0.2 ml PCR tubes, 4 x PCR stripe (8 x 0.2 ml)



Item code: Z167M
Hermle Microlitre Centrifuge



\$15,200 **19% OFF**
\$12,330

- max.Speed: 14,000 rpm
- max. RCF: 15,994 xg
- max. Volume: 18 x 1.5 / 2.0 ml tubes
- Speed Range: 200 - 14,000 rpm



Item code: AAH14145K
OF4-15S Standard Forced Convection Oven



\$20,077 **37% OFF**
\$12,640

- Chamber volume (L/cu ft): 147/5.19
- Temperature Range (°C): Amb. + 10°-250
- Heating time to 100°C (min): 15
- Interior (W x D x H, mm/inch): 550 x 376 x 710
- Exterior (W x D x H, mm): 728 x 704 x 914



Item code: AAH35085K
T-18QG Hotplate (Digital type)



\$4,974 **33% OFF**
\$3,330

- Temperature range (°C / °F): Max. 350 / 662
- Load, Max. (kg / lbs): 25 / 55.1
- Top plate Dimension (WxD) (mm): 180x180

Item code: AAH821232K
TH3-ME-065 (Tabletop type) Temperature & Humidity Chamber



\$145,444 **44% OFF**
\$65,000

- Chamber volume (L / cu ft): 65 / 2.3
- Dimension (WxDxH) (mm): 400 x 330 x 495
- Temperature Range(°C): -20 to 150
- Humidity Range (%RH): 20 to 95



Item code: ABJ220-4NM
Analytical balances ABJ-NM



\$23,808 **62% OFF**
\$9,050

- Weighing capacity [Max] g: 220
- Read-ability [d] mg: 0.1

Item code: ADJ 100-4
Analytical balance ADJ



Sold out

- Weighing capacity [Max] g: 120
- Read-ability [d] mg: 0.1

Item code: EMS 3000-2
School balance EMS



Sold out

- Weighing capacity [Max] g: 3000
- Read-ability [d] g: 0.01

Item code: ADB 200-4
Analytical balance ADB



Sold out

- Weighing capacity [Max] g: 220
- Read-ability [d] mg: 0.1

Item code: ADJ 200-4
Analytical balance ADJ



Sold out

- Weighing capacity [Max] g: 220
- Read-ability [d] mg: 0.1

Item code: ORF3SM
Digital refractometer ORF-S



Sold out

- Brix: 0% - 45%
- Salt[NaCl]: 0% - 28%
- Refractive index: 1.3330 nD - 1.3900 nD



Item code: 158750
High Pressure Pump HPP-1100



\$20,440 **50% OFF**
\$10,205

- 10L/min, 196kPa (2kg/cm²)
- Max. flow rate: 24/26L/min
- Simply set it together with the high-pressure pump base (sold separately) on the top of the CA type

K KOLD SYSTEMS

Item code: *KS-30IM*
Kold Systems Flake Ice Maker



Sold out

- Capacity: 30kg/day
- Ice Storage: 7kg
- SS304 finish
- Ext. Dimension: 352 x 551 x 565mm

Item code: *KS-100IM*
Kold Systems Flake Ice Maker



- Capacity: 100kg/day
- Ice Storage: 20kg
- SS304 finish
- Ext. Dimension: 548 x 611 x 883mm

Item code: *KS-600F*
-20 C Laboratory Freezer



- Capacity: 620L
- Solid door design
- Exterior: Painted Steel ; Interior: Moulded ABS
- Operating temperature: -10 to -25°C

Item code: *KS-600R*
4 C Laboratory Refrigerator



Sold out

- Capacity: 620L
- Solid door design
- Exterior: Painted Steel ; Interior: Moulded ABS
- Operating temperature: 2 to 8°C

Item code: *KS-700ULT*
Ultralow Freezer



- Capacity: 741L
- Exterior: Painted Steel
- Insulation: ABS + Polyurethane
- Interior: Stainless Steel
- Operating temperature: -60 to -80°C

VESTFROST

Item code: *F-90i*
-5 C to -25 C Freezer with i-care controller



- Volume: 90L
- Temperature range: -5°C to -25°C
- Ext. Dimension: 672 x 595 x 642mm

Item code: *R-90i*
2 C to 20 C Refrigerator with i-care controller



- Volume: 90L
- Temperature range: 2°C to 20°C
- Ext. Dimension: 672 x 595 x 642mm

Item code: *R-138i*
2 C to 20 C Refrigerator with i-care controller



- Volume: 138L
- Temperature range: 2°C to 20°C
- Ext. Dimension: 825 x 595 x 642mm

Item code: *R-427i*
2 C to 20 C Refrigerator with i-care controller



- Volume: 427L
- Temperature range: 2°C to 20°C
- Ext. Dimension: 2002 x 595 x 642mm

MS major science

Item code: *MP-310*
Lively 300V Power Supply



- Output Voltage / Inc: 5 - 300V / 1V
- Output Current / Inc: 1 - 700mA / 1mA
- Power: Output: 150W; Input: 200W
- Rated Voltage: 100-240V; 47-60Hz

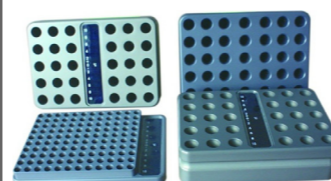
Item code: *A-STWS-1100*
4ft Safety Balance Workstation without Filter box



- Electrical power supply: 220V, 50Hz
- Cabinet body: Acrylic
- Including support stand



Item code: *EC-120-PCR*
EvenCool Blocks (only 120 X 0.2 ml Tubes with Temperature indicator)



- Rapidly Adapt to Temperature: -196°C to +100°C
- +/- 0.1°C temperature uniformity of all tubes when cooling, freezing or heating/thawing

Item code: *GC-WS-CB-35X2.0*
GeloCool (includes cooling core C & Block 35 x 2.0 ml Tubes)



- Provides over 14 hours of 0°C to 4°C cooling



Item code: LX-LS-1500

LabSim Static laboratory bench (W1500)



~~\$10,850~~ 14% OFF
\$9,350

- Dim: 1500x750x844mm
- Worktop: 20mm Phenolic Resin,
- Frame: Rectangle Frame, 40x60mm in Oven Baked Powder Coated Finish Steel
- With 30mm Adjustable Levelling Feet



Item code: LX-LS-VST-L-N

The All-rounder 5 legs Lab Stool



~~\$530~~ 15% OFF
\$450

- Material: Vinyl, Colour in Black
- No Foot Ring
- With Plastic Wheels
- Seat Height: 420mm - 550mm
- Standard Comply: EN BS 7176:2007 for medium hazard



Item code: LX-LS-PLB-T-MR

The Pose 5 legs Lab Stool



~~\$970~~ 15% OFF
\$820

- Material: PU, Colour in Black
- Foot Ring: Metal
- Seat Height: 620mm - 730mm



Item code: LCM-1605-008

The Fundamental Gaslifting Chair with Plastic Footring & Wheels

Sold out



- Material: Vinyl, Colour in Black
- Foot Ring: Plastic
- Whit Plastic Wheels
- Seat Height: 595mm to 840mm

Item code: LX-LS-PBC-T-MR

The Core 5 legs Lab Stool



~~\$1,450~~ 15% OFF
\$1,230

- Material: PU, Colour in Black
- Foot Ring: Metal
- With or Without Castors
- Seat Height: 575mm - 825mm



Item code: LX-LS-VSD-S-MR

The Pony Saddle Chair



~~\$1,130~~ 15% OFF
\$960

- Material: Vinyl, Colour in Black
- Foot Ring: Metal
- With or Without Castors
- Seat Height: 510mm - 690mm



BROEN-LAB

Item code: 17556.009

Body shower with eye/face shower and bowl, modular.



~~\$21,200~~ 15% OFF
\$18,100

- In brass and SS with chemical resistant red BROEN-LAB Polycoat with selfdraining shower head.
- Eye wash with built-in FLOWFIX for regulation of water flow (14 l/min).
- Bowl in Stainless Steel.



Item code: 17580.009

Body shower, ceiling mounted with selfdraining head.



~~\$5,300~~ 15% OFF
\$4,570

- In brass with chemical resistant BROEN-LAB Polycoat.
- Min. working pressure: 1 bar.
- Weight: Approx. 2 kg



Item code: 8922021

22 Gal Corrosive Series : Sure-Grip®



~~\$13,648~~ 15% OFF
\$11,600

- Ideal for areas with limited floor space or to expand current storage conditions
- Offer same quality safety features as cabinets for flammables
- FM-approved



Item code: KC4X

Stainless Steel Emergency Shower & Double Outlet EyeWash



~~\$6,200~~ 15% OFF
\$5,270

- Performance: anti-corrosion; anti-acid, alkali and salt solution
- Water out volume: water out volume of Eye Washer head:12-18L / MIN, water out volume of shower head:120-180L / MIN

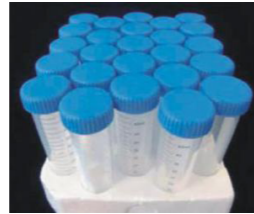




Item code: 309101008
2mL microtube
500/PK,10PK/CS



~~\$130~~
\$70



Item code: 310109003
15ml TC tube
50pcs/pack, 500pcs/case



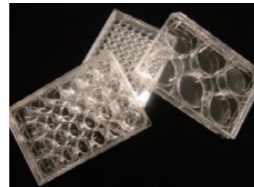
~~\$853~~
\$430



Item code: 310109005
6 well plate, flat bottom
50pcs/case



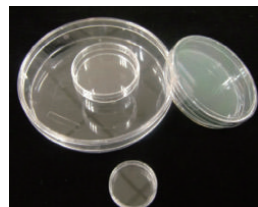
~~\$743~~
\$440



Item code: 310109007
24 well plate, flat bottom,
50pcs/case



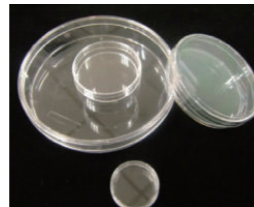
~~\$743~~
\$370



Item code: 310109009
35mm petri dish
20pcs/pack, 500pcs/case



~~\$773~~
\$400



Item code: 310109010
60mm petri dish
20pcs/pack, 500pcs/case



~~\$1,004~~
\$520



Item code: 310109015
75cm² Tissue culture flask, seal
cap, 5pcs/pack, 100pcs/case



~~\$1,314~~
\$580



Item code: 310109016
75cm² Tissue culture flask, Vent
cap with filter 0.22um
5pcs/pack, 100pcs/case



~~\$1,330~~
\$680



Item code: 310109017
175cm² Tissue culture flask, seal
cap, 5pcs/pack, 40pcs/case



~~\$983~~
\$480



Item code: 311117002
universal tip, yellow, 200ul, 96
pcs/rack, 10 racks/inner box



~~\$226~~
\$160



MORE
COMING
SOON